



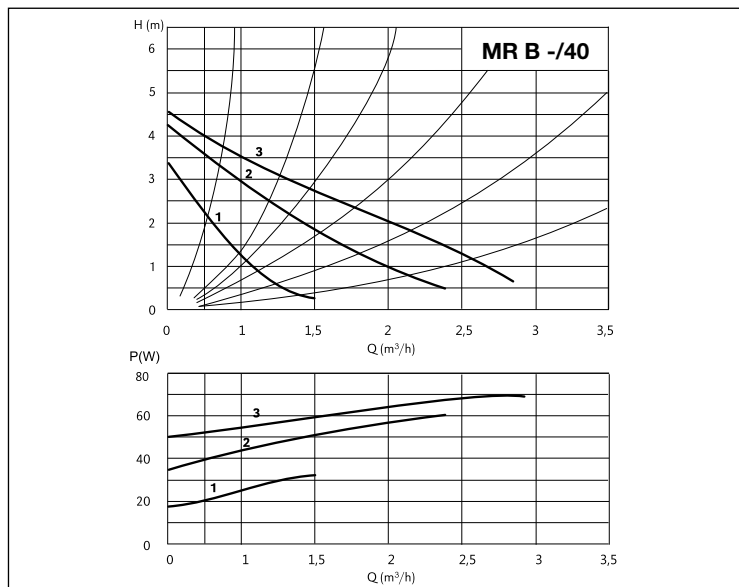
# MR B -/40-130

## DOMESTIC WATER CIRCULATORS

Threaded



### PERFORMANCE CURVES (per ISO 9906 Annex A)



### APPLICATIONS

Circulation pump for domestic hot water systems

### TECHNICAL DATA

- Fixed speed pump (3 speed settings)
- Power supply 1~230V - 50 Hz
- Insulation class H
- Protection rating IP44
- Maximum operating pressure: 10 bar
- Maximum ambient temperature: 40°C
- Fluid temperature range: +5 to +65°C

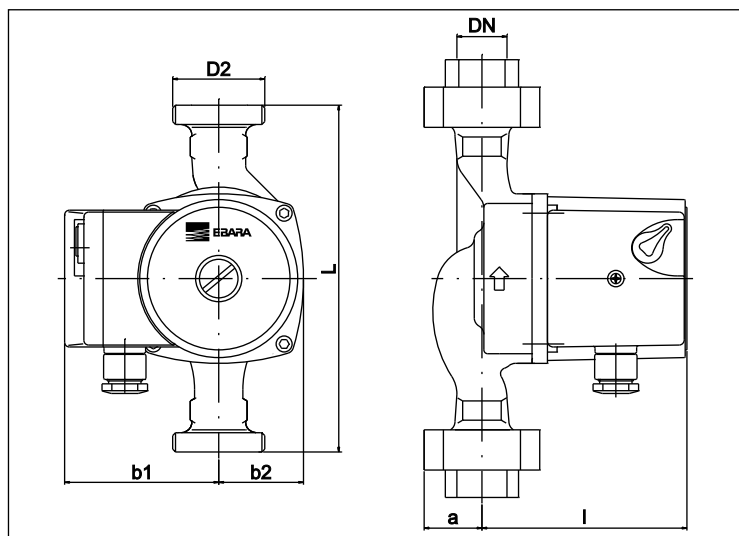
### MATERIALS

- Bronze pump body
- Polyamide impeller
- Stainless steel shaft
- Graphite radial bearing
- Pipe and separator plate in AISI 316 stainless steel

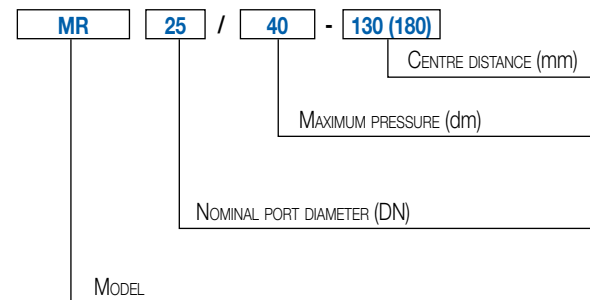
### ADMITTED FLUIDS

- Clear, clean, non-aggressive and non-explosive fluids, with no solid particles or fibres

### DIMENSIONS



### IDENTIFICATION CODE



### DIMENSIONS CHART

Model	L	DN	b1	b2	l	a	D2
MR B 15/40-130	130	15	80	44	108	28	1"
MR B 25/40-130	130	25	80	44	108	28	1 1/2"

### TECHNICAL CHARACTERISTICS

Model	Centre distance [mm]	DN	Pump connection	Pipeline connection	Temperature of fluid (min - max°C)	PN [bar]	P1 max [W]	In max 1~230V [A]	Minimum suction pressure [bar]			Weight [kg]
									50°C	80°C	110°C	
MR B 15/40-130	130	DN15	G 1"	Rp 1/2"	+5 +65	10	75	0.33	0.05	0.4	1.1	2.3
MR B 25/40-130	130	DN25	G 1 1/2"	Rp 1"	+5 +65	10	75	0.33	0.05	0.4	1.1	2.4



# MR B -/60-130

## DOMESTIC WATER CIRCULATORS

Threaded



### APPLICATIONS

Circulation pump for domestic hot water systems

### TECHNICAL DATA

- Fixed speed pump (3 speed settings)
- Power supply 1~230V - 50 Hz
- Insulation class H
- Protection rating IP44
- Maximum operating pressure: 10 bar
- Maximum ambient temperature: 40°C
- Fluid temperature range: +5 to +65°C

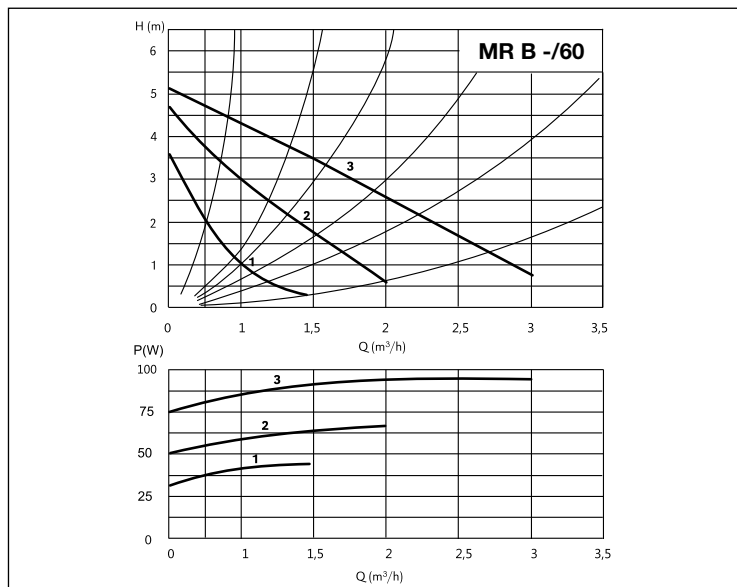
### MATERIALS

- Bronze pump body
- Polyamide impeller
- Stainless steel shaft
- Graphite radial bearing
- Pipe and separator plate in AISI 316 stainless steel

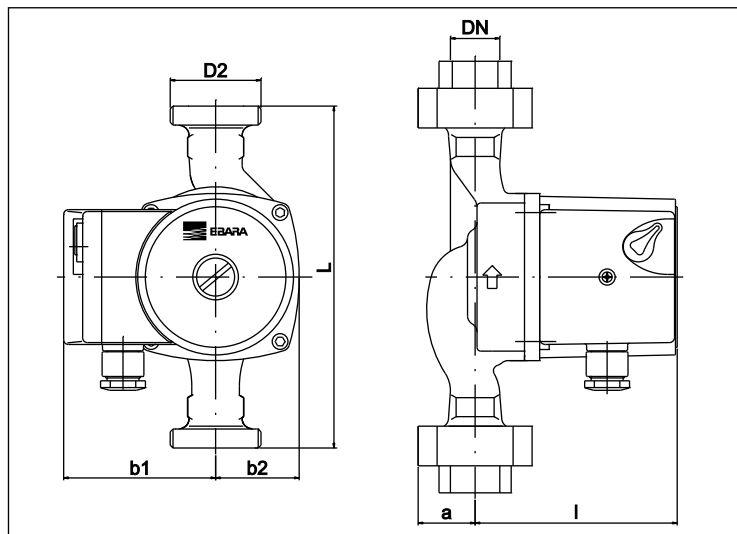
### ADMITTED FLUIDS

- Clear, clean, non-aggressive and non-explosive fluids, with no solid particles or fibres

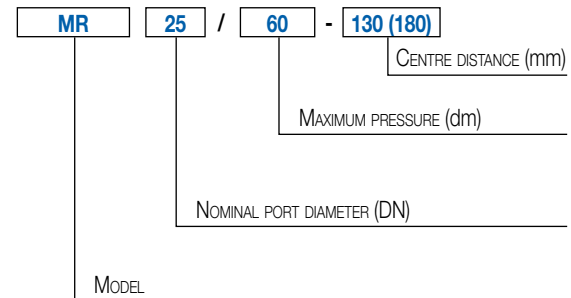
### PERFORMANCE CURVES (per ISO 9906 Annex A)



### DIMENSIONS



### IDENTIFICATION CODE



### DIMENSIONS CHART

Model	L	DN	b1	b2	l	a	D2
MR B 15/60-130	130	15	80	44	108	28	1"
MR B 25/60-130	130	25	80	44	108	28	1 1/2"

### TECHNICAL CHARACTERISTICS

Model	Centre distance [mm]	DN	Pump connection	Pipeline connection	Temperature of fluid (min - max°C)	PN [bar]	P1 max [W]	In max 1~230V [A]	Minimum suction pressure [bar]			Weight [kg]
									50°C	80°C	110°C	
MR B 15/60-130	130	DN15	G 1"	Rp 1/2"	+5 +65	10	90	0.39	0.05	0.4	1.1	2.5
MR B 25/60-130	130	DN25	G 1 1/2"	Rp 1"	+5 +65	10	90	0.39	0.05	0.4	1.1	2.6

The contents of this publication should not be regarded as binding. EBARA Pumps Europe S.p.A. reserves the right to effect any modification without prior notice.



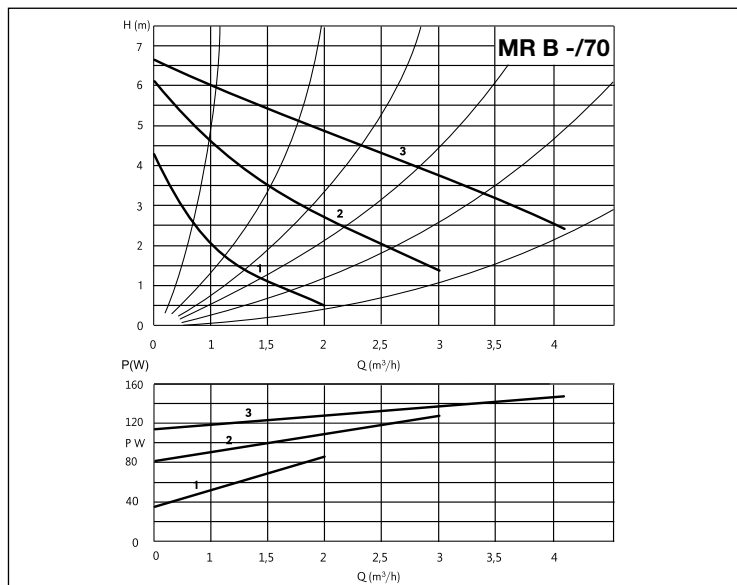
# MR B -/70-130

## DOMESTIC WATER CIRCULATORS

Threaded



### PERFORMANCE CURVES (per ISO 9906 Annex A)



### APPLICATIONS

Circulation pump for domestic hot water systems

### TECHNICAL DATA

- Fixed speed pump (3 speed settings)
- Power supply 1~230V - 50 Hz
- Insulation class H
- Protection rating IP44
- Maximum operating pressure: 10 bar
- Maximum ambient temperature: 40°C
- Fluid temperature range: +5 to +65°C

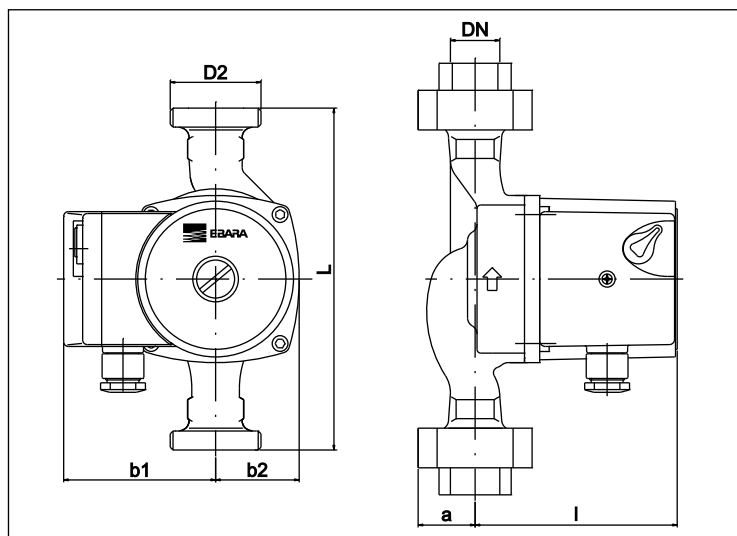
### MATERIALS

- Bronze pump body
- Polyamide impeller
- Ceramic shaft
- Graphite radial bearing
- Pipe and separator plate in AISI 316 stainless steel

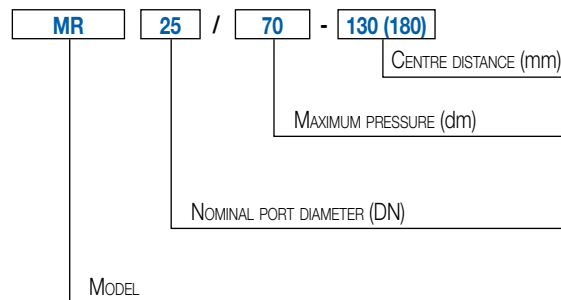
### ADMITTED FLUIDS

- Clear, clean, non-aggressive and non-explosive fluids, with no solid particles or fibres

### DIMENSIONS



### IDENTIFICATION CODE



### DIMENSIONS CHART

Model	L	DN	b1	b2	l	a	D2
MR B 25/70-130	130	25	80	44	108	28	1 1/2"

### TECHNICAL CHARACTERISTICS

Model	Centre distance [mm]	DN	Pump connection	Pipeline connection	Temperature of fluid (min - max°C)	PN [bar]	P1 max [W]	In max 1~230V [A]	Minimum suction pressure [bar]			Weight [kg]
									50°C	80°C	110°C	
MR B 25/70-130	130	DN25	G 1 1/2"	Rp 1"	+5 +65	10	140	0.62	0.05	0.4	1.1	2.6

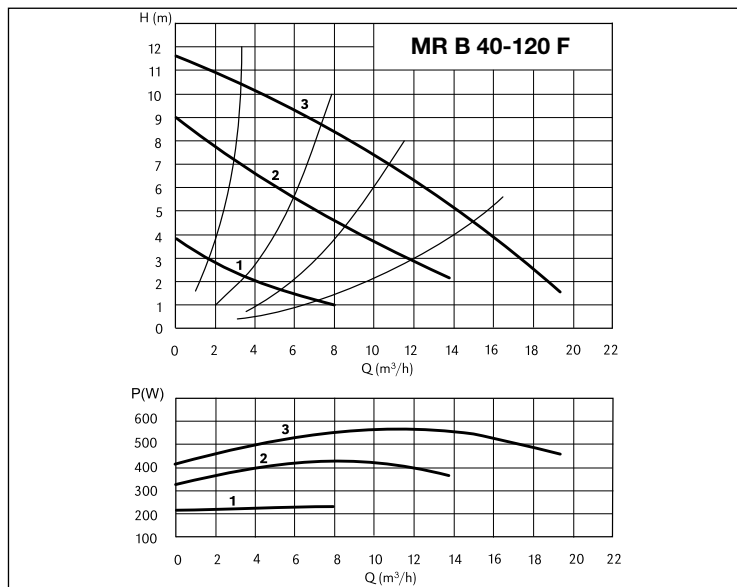
# MR B 40-120 F

## DOMESTIC WATER CIRCULATORS

Flanged



### PERFORMANCE CURVES (per ISO 9906 Annex A)



### APPLICATIONS

Circulation pump for domestic hot water systems

### TECHNICAL DATA

- Fixed speed pump (3 speed settings)
- Power supply 3~400V - 50 Hz
- Insulation class H
- Protection rating IP43
- Maximum operating pressure: 10 bar
- Maximum ambient temperature: 40°C
- Fluid temperature range -10 to +65°C

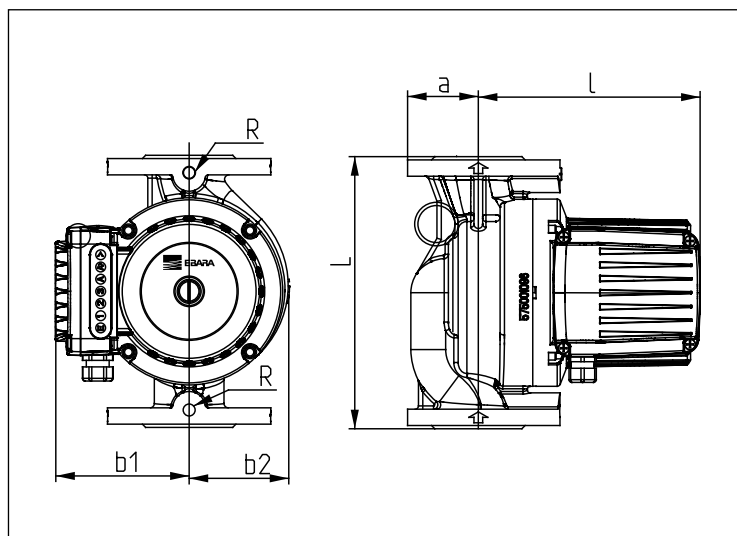
### MATERIALS

- Bronze pump body
- Stainless steel impeller
- Stainless steel shaft
- Graphite radial bearing
- Pipe and separator plate in AISI 316 stainless steel

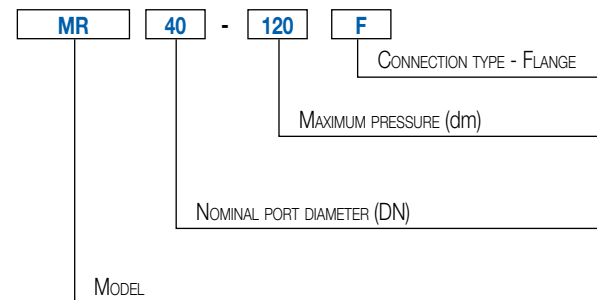
### ADMITTED FLUIDS

- Clear, clean, non-aggressive and non-explosive fluids, with no solid particles or fibres

### DIMENSIONS



### IDENTIFICATION CODE



### DIMENSIONS CHART

Model	L	DN	b1	b2	l	a
MR B 40-120 F	250	40	153	92	198	65

### TECHNICAL CHARACTERISTICS

Model	Centre distance [mm]	DN	Temperature of fluid (min - max °C)	PN [bar]	P1 max [W]	In max 3~400V [A]	Minimum suction pressure [bar]			Weight [kg]
							50°C	80°C	110°C	
MR B 40-120 F	250	DN40	-10 +65	10	578	1.46	0.05	0.8	1.4	22.0



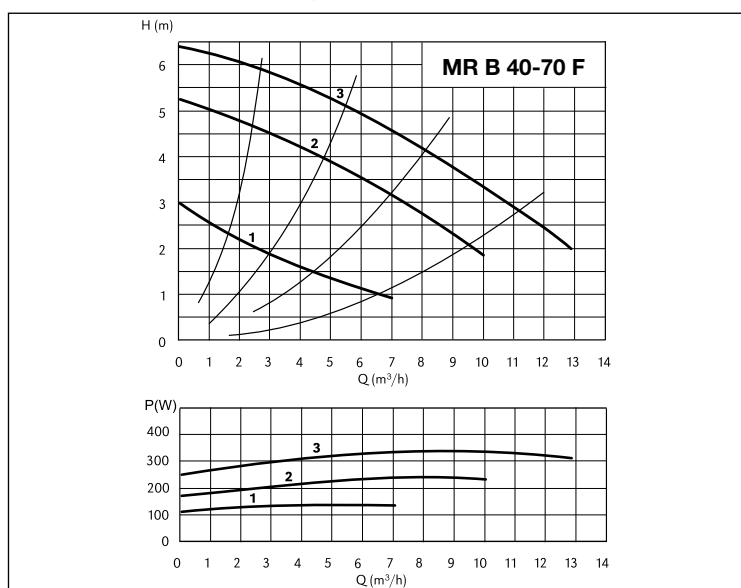
# MR B 40-70 F

## DOMESTIC WATER CIRCULATORS

Flanged



### PERFORMANCE CURVES (per ISO 9906 Annex A)



### APPLICATIONS

Circulation pump for domestic hot water systems

### TECHNICAL DATA

- Fixed speed pump (3 speed settings)
- Power supply 3~400V - 50 Hz
- Insulation class H
- Protection rating IP43
- Maximum operating pressure: 10 bar
- Maximum ambient temperature: 40°C
- Fluid temperature range -10 to +65°C

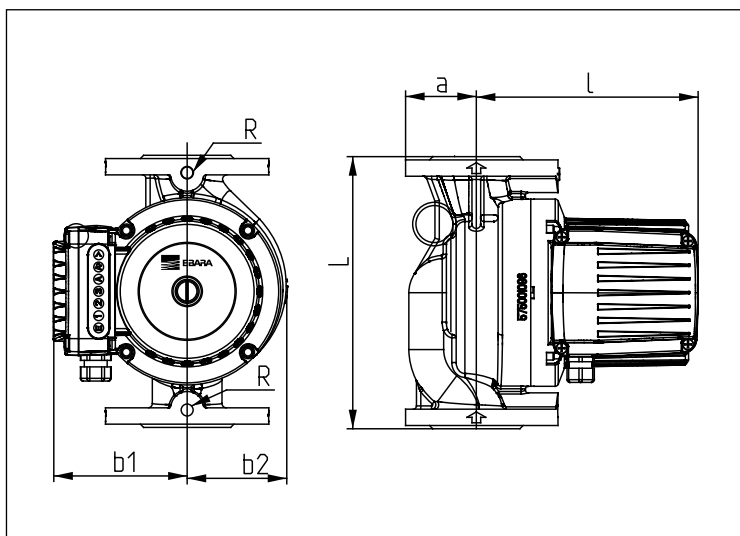
### MATERIALS

- Bronze pump body
- Stainless steel impeller
- Stainless steel shaft
- Graphite radial bearing
- Pipe and separator plate in AISI 316 stainless steel

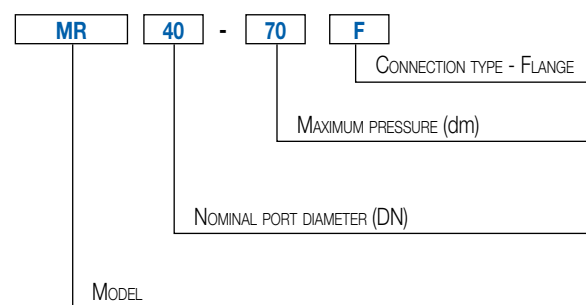
### ADMITTED FLUIDS

- Clear, clean, non-aggressive and non-explosive fluids, with no solid particles or fibres

### DIMENSIONS



### IDENTIFICATION CODE



### DIMENSIONS CHART

Model	L	DN	b1	b2	l	a
MR B 40-70 F	250	40	153	92	198	65

### TECHNICAL CHARACTERISTICS

Model	Centre distance [mm]	DN	Temperature of fluid (min - max °C)	PN [bar]	P1 max [W]	In max 3~400V [A]	Minimum suction pressure [bar]			Weight [kg]
							50°C	80°C	110°C	
MR B 40-70 F	250	DN40	-10 +65	10	295	0.74	0.05	0.8	1.4	22.0

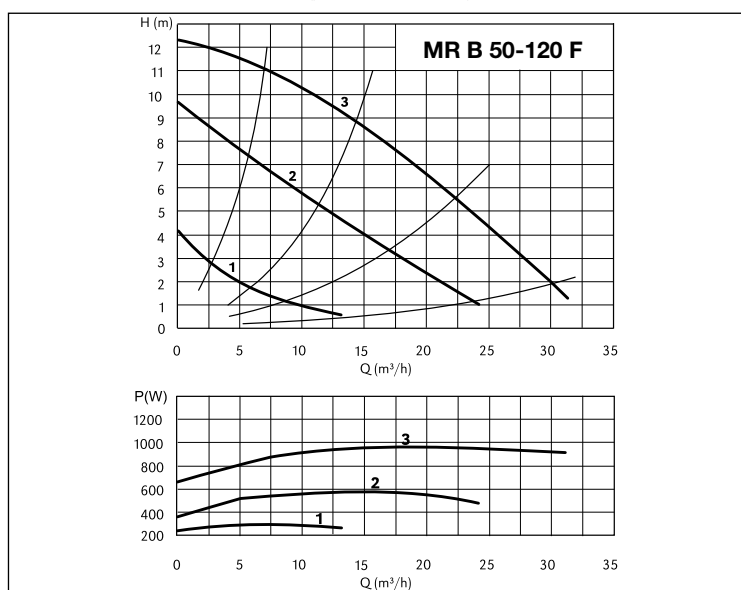
# MR B 50-120 F

## DOMESTIC WATER CIRCULATORS

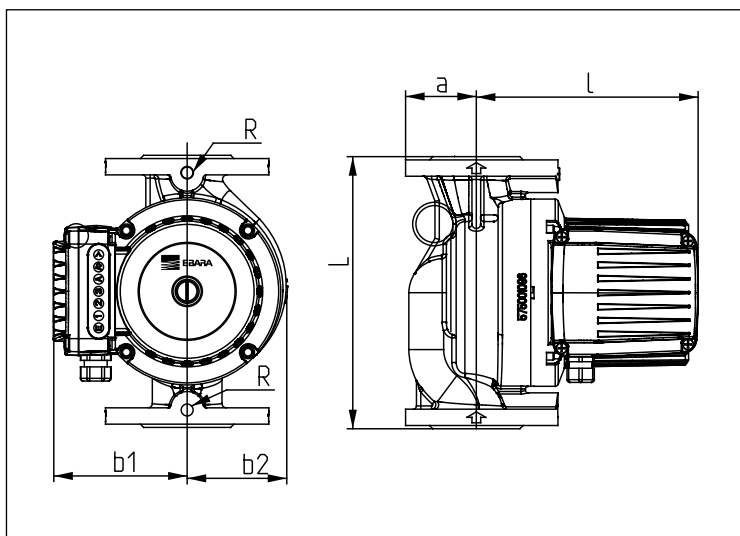
Flanged



### PERFORMANCE CURVES (per ISO 9906 Annex A)



### DIMENSIONS



### APPLICATIONS

Circulation pump for domestic hot water systems

### TECHNICAL DATA

- Fixed speed pump (3 speed settings)
- Power supply 3~400V - 50 Hz
- Insulation class H
- Protection rating IP43
- Maximum operating pressure: 10 bar
- Maximum ambient temperature: 40°C
- Fluid temperature range -10 to +65°C

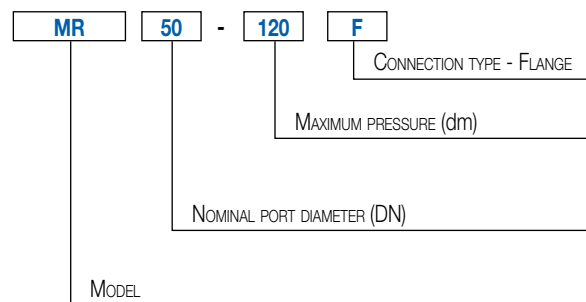
### MATERIALS

- Bronze pump body
- Stainless steel impeller
- Stainless steel shaft
- Graphite radial bearing
- Pipe and separator plate in AISI 316 stainless steel

### ADMITTED FLUIDS

- Clear, clean, non-aggressive and non-explosive fluids, with no solid particles or fibres

### IDENTIFICATION CODE



### DIMENSIONS CHART

Model	L	DN	b1	b2	l	a
MR B 50-120 F	280	50	160	113	250	70

### TECHNICAL CHARACTERISTICS

Model	Centre distance [mm]	DN	Temperature of fluid (min - max °C)	PN [bar]	P1 max [W]	In max 3~400V [A]	Minimum suction pressure [bar]			Weight [kg]
							50°C	80°C	110°C	
MR B 50-120 F	280	DN50	-10 +65	10	1020	1.73	0.05	0.8	1.4	28.0



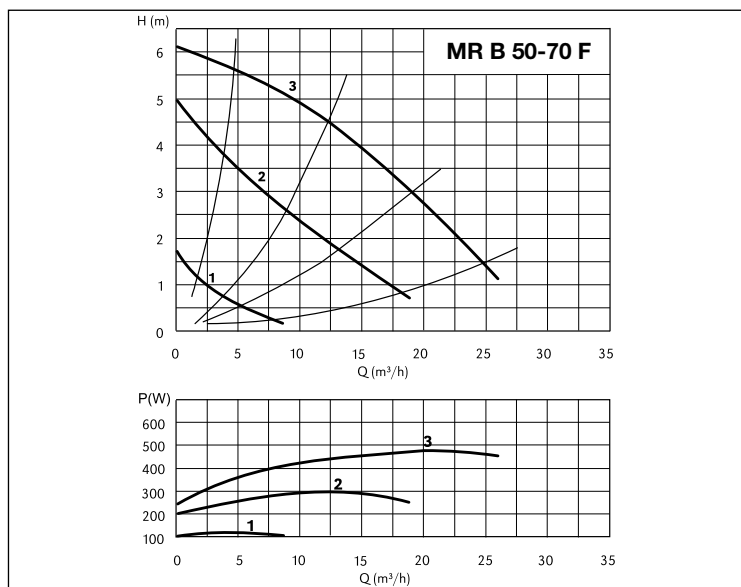
# MR B 50-70 F

## DOMESTIC WATER CIRCULATORS

Flanged



### PERFORMANCE CURVES (per ISO 9906 Annex A)



### APPLICATIONS

Circulation pump for domestic hot water systems

### TECHNICAL DATA

- Fixed speed pump (3 speed settings)
- Power supply 3~400V - 50 Hz
- Insulation class H
- Protection rating IP43
- Maximum operating pressure: 10 bar
- Maximum ambient temperature: 40°C
- Fluid temperature range -10 to +65°C

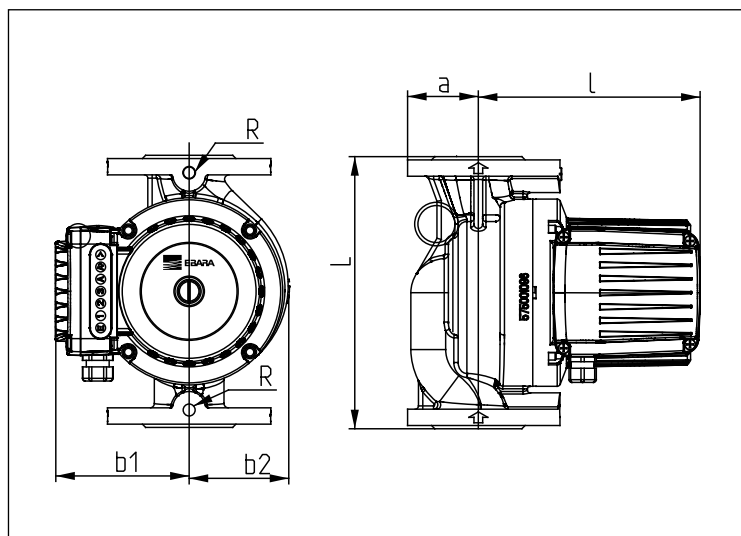
### MATERIALS

- Bronze pump body
- Stainless steel impeller
- Stainless steel shaft
- Graphite radial bearing
- Pipe and separator plate in AISI 316 stainless steel

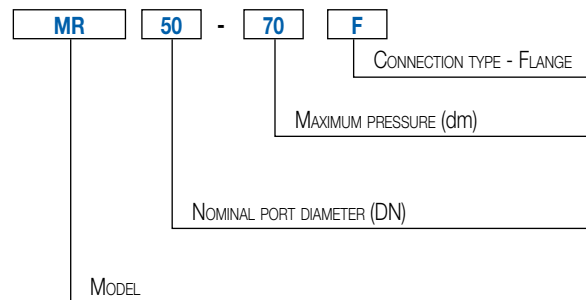
### ADMITTED FLUIDS

- Clear, clean, non-aggressive and non-explosive fluids, with no solid particles or fibres

### DIMENSIONS



### IDENTIFICATION CODE



### DIMENSIONS CHART

Model	L	DN	b1	b2	l	a
MR B 50-70 F	280	50	160	113	250	70

### TECHNICAL CHARACTERISTICS

Model	Centre distance [mm]	DN	Temperature of fluid (min - max °C)	PN [bar]	P1 max [W]	In max 3~400V [A]	Minimum suction pressure [bar]			Weight [kg]
							50°C	80°C	110°C	
MR B 50-70 F	280	DN50	-10 +65	10	470	1.15	0.30	1.0	1.6	28.0

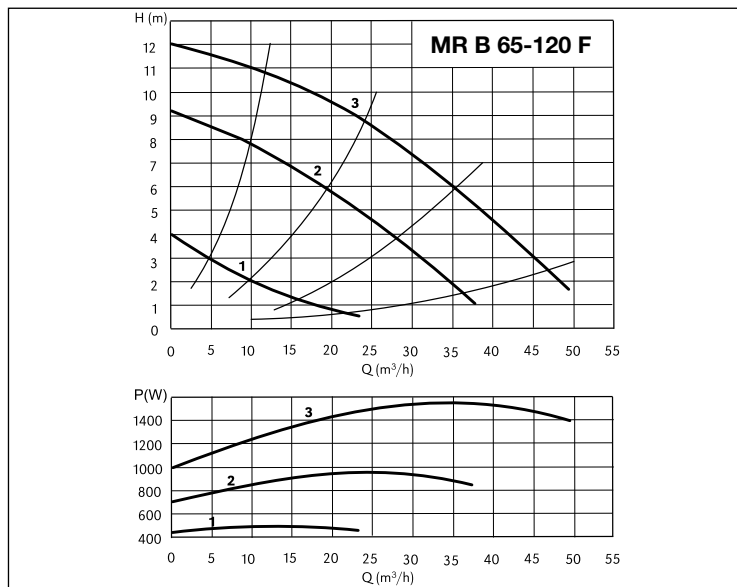
# MR B 65-120 F

## DOMESTIC WATER CIRCULATORS

Flanged



### PERFORMANCE CURVES (per ISO 9906 Annex A)



### APPLICATIONS

Circulation pump for domestic hot water systems

### TECHNICAL DATA

- Fixed speed pump (3 speed settings)
- Power supply 3~400V - 50 Hz
- Insulation class H
- Protection rating IP43
- Maximum operating pressure: 10 bar
- Maximum ambient temperature: 40°C
- Fluid temperature range -10 to +65°C

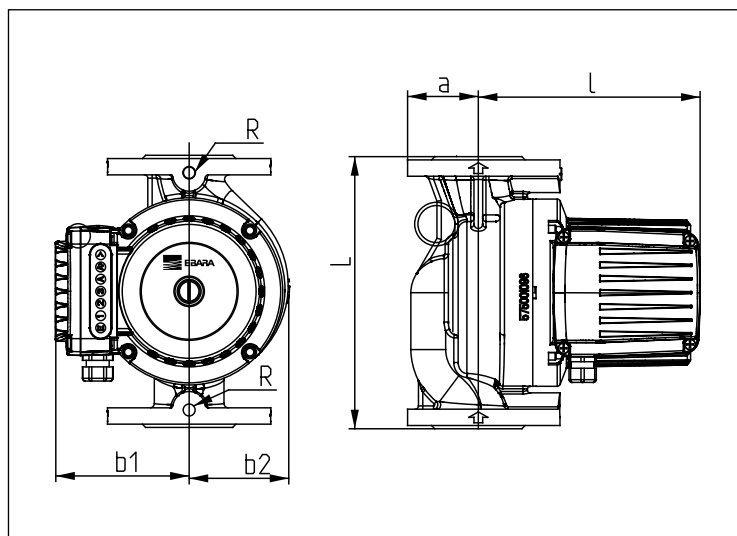
### MATERIALS

- Bronze pump body
- Stainless steel impeller
- Stainless steel shaft
- Graphite radial bearing
- Pipe and separator plate in AISI 316 stainless steel

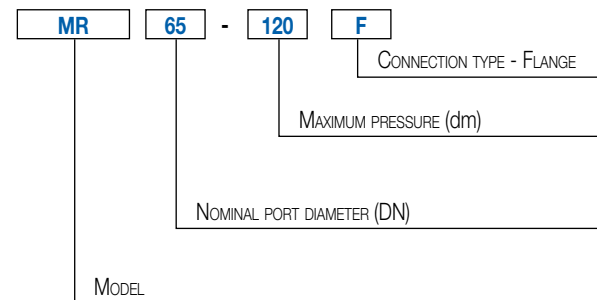
### ADMITTED FLUIDS

- Clear, clean, non-aggressive and non-explosive fluids, with no solid particles or fibres

### DIMENSIONS



### IDENTIFICATION CODE



### DIMENSIONS CHART

Model	L	DN	b1	b2	l	a
MR B 65-120 F	340	65	160	123	252	80

### TECHNICAL CHARACTERISTICS

Model	Centre distance [mm]	DN	Temperature of fluid (min - max °C)	PN [bar]	P1 max [W]	In max 3~400V [A]	Minimum suction pressure [bar]			Weight [kg]
							50°C	80°C	110°C	
MR B 65-120 F	340	65	-10 +65	10	1560	2.80	0.30	1.0	1.6	36.0



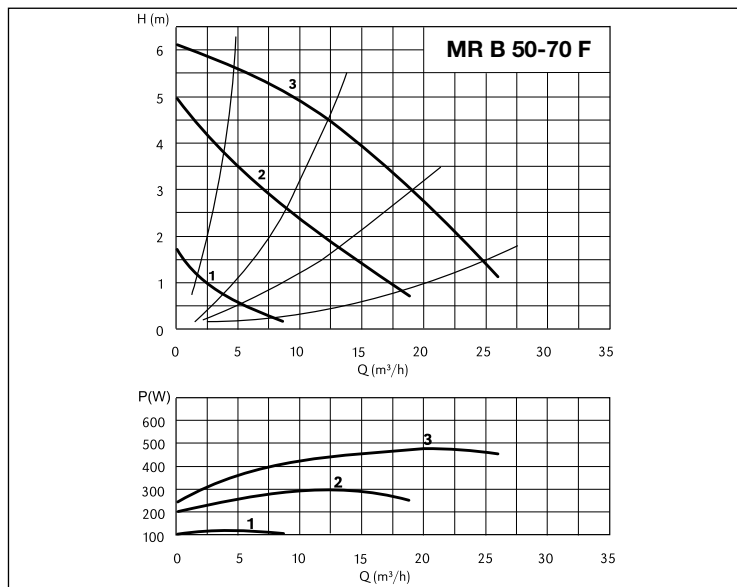
# MR B 50-70 F

## DOMESTIC WATER CIRCULATORS

Flanged



### PERFORMANCE CURVES (per ISO 9906 Annex A)



### APPLICATIONS

Circulation pump for domestic hot water systems

### TECHNICAL DATA

- Fixed speed pump (3 speed settings)
- Power supply 3~400V - 50 Hz
- Insulation class H
- Protection rating IP43
- Maximum operating pressure: 10 bar
- Maximum ambient temperature: 40°C
- Fluid temperature range -10 to +65°C

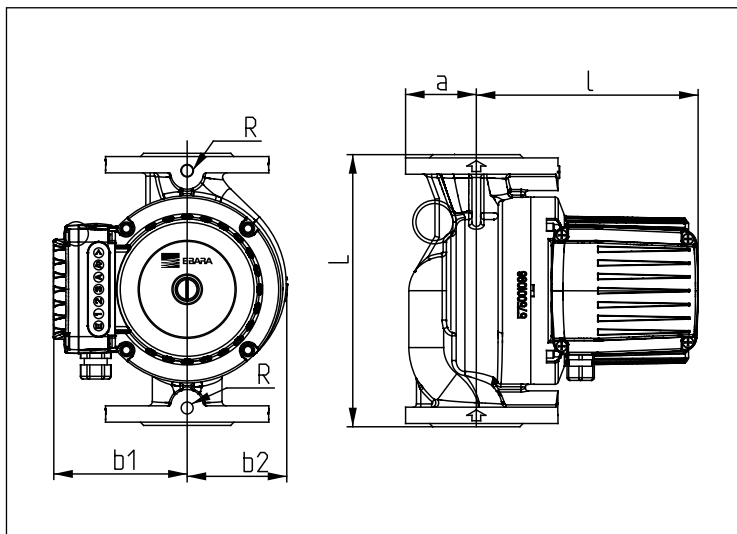
### MATERIALS

- Bronze pump body
- Stainless steel impeller
- Stainless steel shaft
- Graphite radial bearing
- Pipe and separator plate in AISI 316 stainless steel

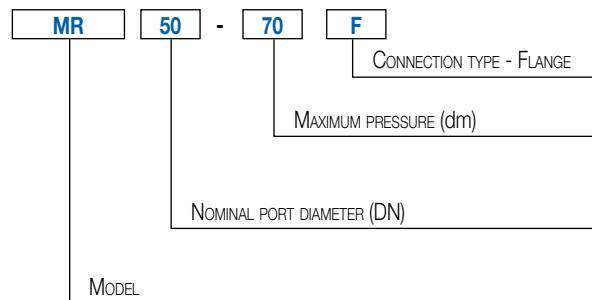
### ADMITTED FLUIDS

- Clear, clean, non-aggressive and non-explosive fluids, with no solid particles or fibres

### DIMENSIONS



### IDENTIFICATION CODE



### DIMENSIONS CHART

Model	L	DN	b1	b2	l	a
MR B 50-70 F	280	50	160	113	250	70

### TECHNICAL CHARACTERISTICS

Model	Centre distance [mm]	DN	Temperature of fluid (min - max °C)	PN [bar]	P1 max [W]	In max 3~400V [A]	Minimum suction pressure [bar]			Weight [kg]
							50°C	80°C	110°C	
MR B 50-70 F	280	DN50	-10 +65	10	470	1.15	0.30	1.0	1.6	28.0